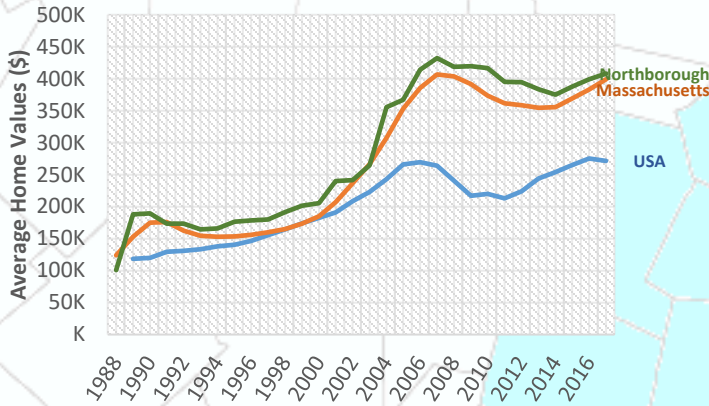


# Northborough

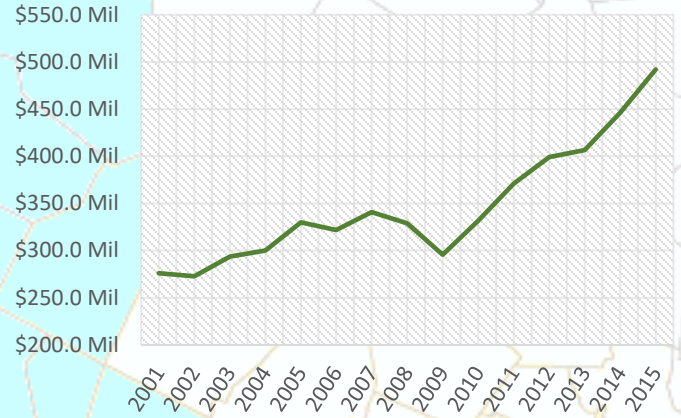
## STRENGTH IN NUMBERS: 2017 EDITION Demographic Data for the 495/MetroWest Region

### Rising Home Values



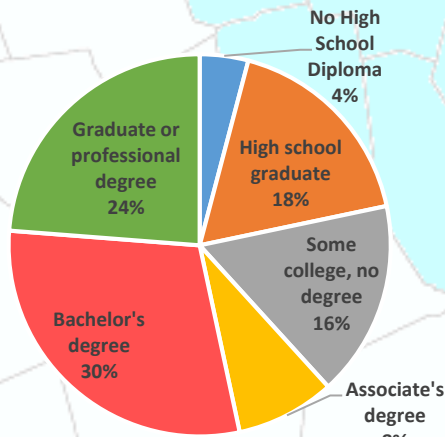
Beyond the year to year averages, in February 2017, the average single family home in Northborough sold for \$471,000<sup>1</sup>. This is much higher than the state median sale price for the same month which was \$319,000<sup>1</sup> and the national median for February which was \$228,200<sup>2</sup>.

### Increasing Payroll



From Q2 2015 to Q2 2016, the payroll for all places of employment in Northborough was \$505,115,384.<sup>3</sup> As the town has recovered from the recession the payroll has increased significantly in the last few years.

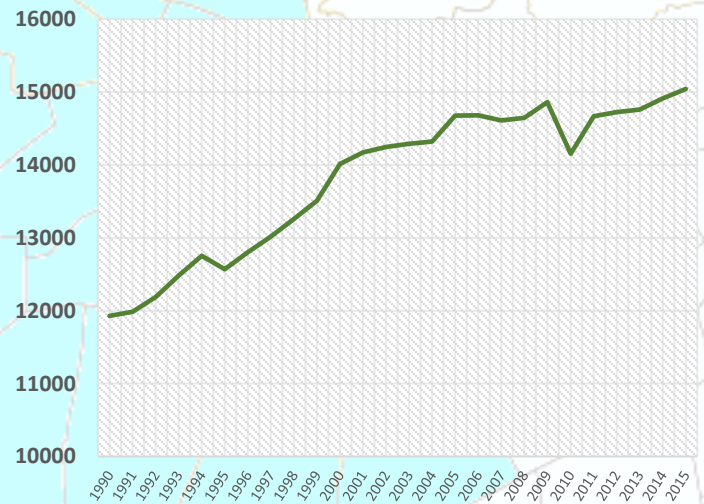
### Highly Educated



2011-2015 ACS (U.S. Census Bureau)

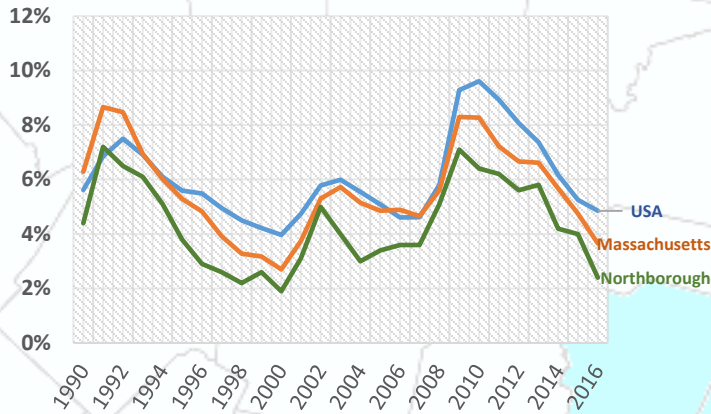
Northborough has a highly educated population compared to the state and to the nation with 54% of residents having a bachelor's degree or higher. During the same time 40.5% of people in Massachusetts had a bachelor's degree or higher, while only 29.8% of all people in the U.S. had one.<sup>4</sup>

### Growing Population



The population of Northborough has been increasing slowly. In 2000, the population of Northborough was 14,013 this increased to 14,155 by 2010, and in 2015, the population of Northborough was estimated to be approximately 15,042.<sup>5</sup>

## Low Unemployment



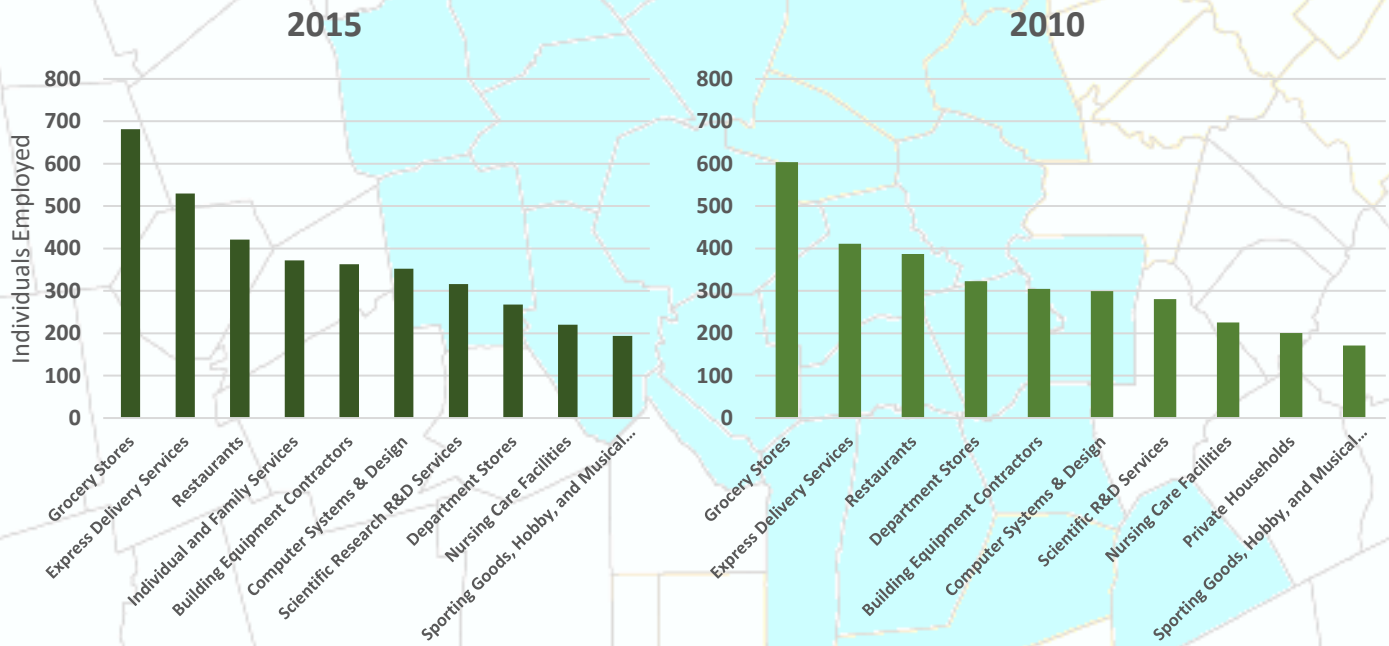
## Expanding Employers



Beyond the year to year averages, in February 2017, the unemployment rate in Northborough was 3.4%. This is the same as the state and 495/MetroWest regional unemployment rates, which were both 3.4%, and much lower than the national unemployment rate of 4.8%<sup>3</sup>

The number of employers in Northborough has been increasing. In 2001, there were 534 employers in the town, and by Q2 2016 this number had increased to 602.<sup>3</sup> Beyond Q2 2016, employer growth continues at developments like Northborough Crossing.

## Top Ten Industries In Northborough



**Top Ten Industries data** and analysis conducted by the Public Policy Center at UMass Dartmouth for the 495/MetroWest Partnership in support of the 495/MW Suburban Edge Community Commission utilizing 2014 US Census Bureau Local Employment Dynamics. For more information on these data sets please visit <http://lehd.ces.census.gov/>

### Sources:

- Mass.gov Municipal Databank <http://www.mass.gov/dor/local-officials/municipal-databank-and-local-aid-unit/databank-reports-new.html> (Line graph municipal data)  
 1. The Warren Group <http://www.twgstats.com/tssub/start.asp> 2. Ycharts Average US Home Values [https://ycharts.com/indicators/sales\\_price\\_of\\_existing\\_homes](https://ycharts.com/indicators/sales_price_of_existing_homes)  
 3. Mass.gov Labor and Workforce Development <http://www.mass.gov/lwd/economic-data/> 4. US Census Bureau <https://www.census.gov/> 5. UMASS Donahue Institute <http://www.donahue.umassp.edu/news-events/institute-news/new-population-estimates-for-mass-released-interactive-map-available>